

+ Supplemental

Grades K-5

i! imagine español[®]

Culturally relevant, authentic instruction to accelerate
Spanish language and literacy development



Advance Biliteracy, Celebrate Culture

Authentic Spanish pedagogy builds cultural competency alongside foundational skills

Through engaging, culturally diverse, and relevant content, Imagine Español respects and reflects the uniqueness of the Spanish language and the rich, colorful heritage of its speakers.



- Presents an environment resplendent with beloved folk art and music
- Teaches foundational literacy skills using authentic Spanish pedagogy
- Students discover the joys of reading through Latin American and Spanish folktales
- Celebrates stories that elevate the values of family and community cherished throughout Spanish-speaking countries



Authentic texts and culturally rich activities with narrators from 20 Spanish-speaking countries build cultural competency

Instruction embedded in a context built upon the linguistic foundations and deep traditions of the Spanish-speaking world



Evidence-based biliteracy instruction in all four language domains

Science of reading research shows that students need to build strong language-comprehension skills in tandem with word-recognition to become skillful readers. Our solution gives students direct, explicit, and systematic instruction and practice in all areas of language and literacy to improve academic outcomes.



Listening & Speaking — Escucha y responde

Students practice authentic speech in a variety of contexts by responding to visuals or text, telling a story, or recounting an experience.

Reading & Writing — Respondiendo a la lectura

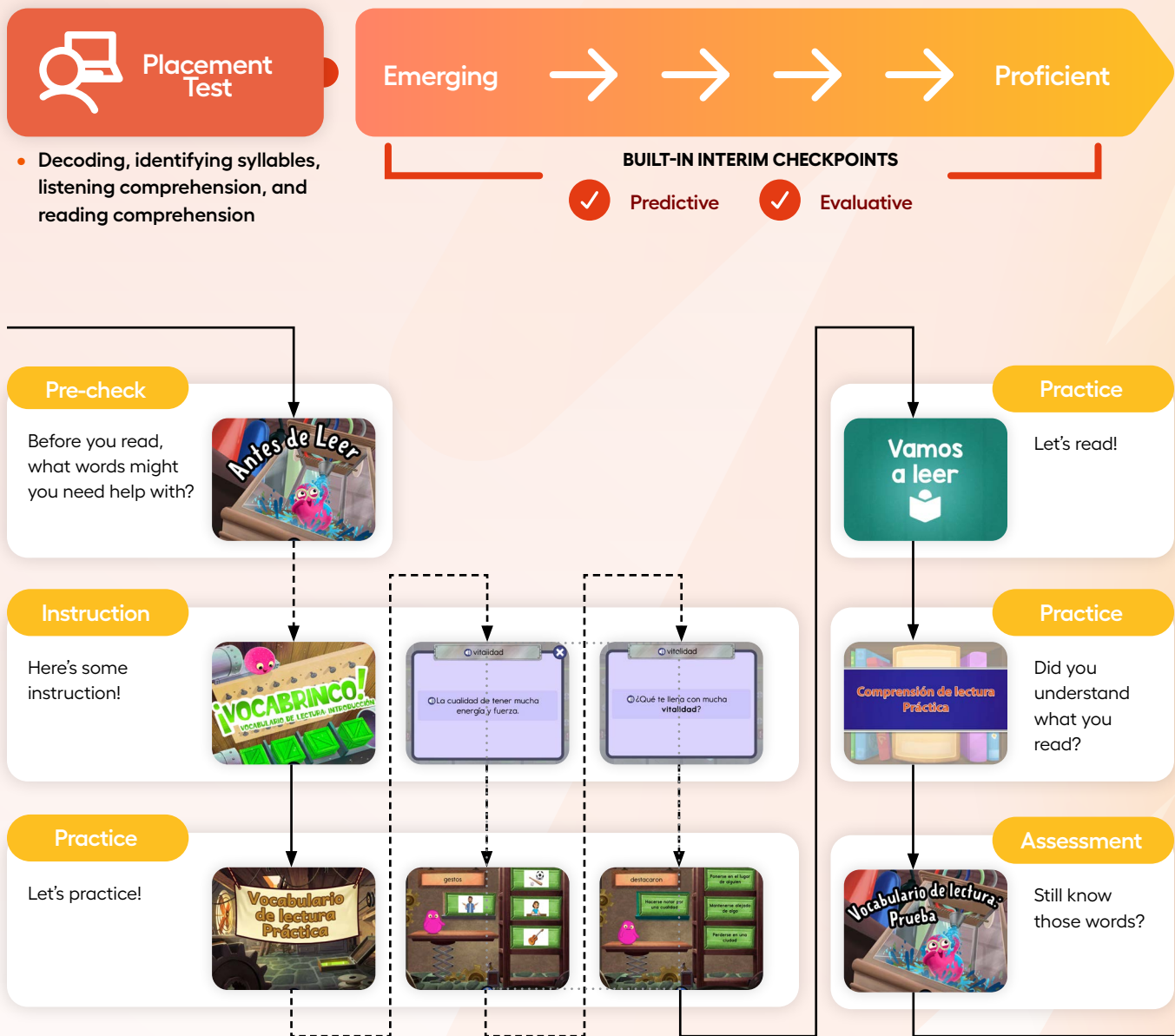
Students write a response to a comprehension question relating to a literary or informational text they have just read and evaluate their response with a writing checklist.



Personalize Learning for Each Student

Adaptive pathways automatically deliver individualized content to each student

- Students are placed in their zone of proximal development
- Adaptive learning pathways adjust based on student performance
- Periodic interim checkpoints — both predictive and evaluative — determine when to add instruction, remediation, or acceleration



“It gauges each individual child’s path of learning. So, if a student is lacking in one area, it’s going to focus on that student’s need. It really does help that teacher support the instruction that she’s doing, but in a differentiated manner.”

• • •
Dr. Esther C., Dual Language Coordinator,
Jefferson Parish Schools

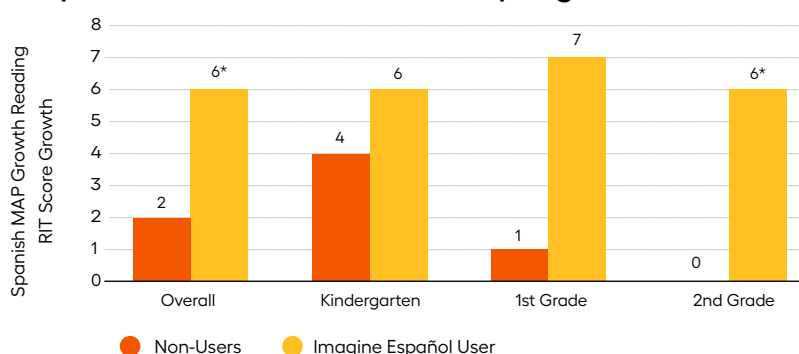


Actionable Data to Improve Learning Outcomes

The results are in:

Imagine Español students demonstrated significantly greater gains on the Spanish MAP™ Growth Reading test than their nonparticipating peers.

Change in Spanish MAP Growth Reading Scores, YES Prep Public Schools, TX, Winter–Spring 2021



Note: * $p < .05$

8

The average number of hours students need to spend in Imagine Español in a school year to show significant increases in performance.



Easy-to-use, timely reports give valuable insight into student progress

Growth Report

- Track student growth on benchmark assessments
- Monitor and document student academic achievement throughout the year



Grouping Report
Student Group: **Grouping Report Group 2** | **Last 30 Days**

All Skill Areas

Skill Area	Count
Phonological Awareness	1
Phonics	2
Fluency	
Vocabulary	
Comprehension	

All Skill Areas

Skill Area	Count
Spelling agudas Spell agudas (words with the stress on the last syllable).	1
Identifying agudas Identify and decide agudas (words with the stress on the last syllable).	2
Identifying the stressed syllable Identify the stressed syllable within a word.	1

Grouping Report

- Identify areas for reteaching by student and skill
- Automatically groups students with similar gaps

Progress by Unit Report

- View student performance by unit
- Helps interpret performance across all units
- Includes students' average scores, lesson scores, and current working grade level

PROGRESS BY UNIT
Unit scores show the average percentage of all the lessons in a unit.

Student	Kindergarten							First Grade			
	Unit 1	Unit 2	Unit 3	Unit 4	Unit 5	Unit 6	Unit 7	Unit 1	Unit 2	Unit 3	Unit 4
Alvaro, Maria	89%	100%	100%	80%	91%	80%	→	70%	74%	76%	86%
Daniels, Luis	→	→	→	→	→	→	→	7%	43%	→	→
Guerra, Santiago	100%	→	→	→	→	→	→	50%	7%	89%	88%
Guerra, Monica	→	→	→	→	→	→	→	100%	4%	65%	74%

Unidad 6: K, W, X, CH, RR, LL

Lección	Score
Lección 50: K mayúscula	100%
Lección 51: K minúscula	50%
Lección 52: W mayúscula	100%
Lección 53: W minúscula	100%

Cumulative Performance Report

Export Date: **Unit 1** | **Unit 2** | **Unit 3** | **Unit 4** | **Unit 5** | **Unit 6** | **Unit 7** | **Unit 8** | **Unit 9** | **Unit 10** | **Unit 11** | **Unit 12** | **Unit 13** | **Unit 14** | **Unit 15** | **Unit 16** | **Unit 17** | **Unit 18** | **Unit 19** | **Unit 20** | **Unit 21** | **Unit 22** | **Unit 23** | **Unit 24** | **Unit 25** | **Unit 26** | **Unit 27** | **Unit 28** | **Unit 29** | **Unit 30** | **Unit 31** | **Unit 32** | **Unit 33** | **Unit 34** | **Unit 35** | **Unit 36** | **Unit 37** | **Unit 38** | **Unit 39** | **Unit 40** | **Unit 41** | **Unit 42** | **Unit 43** | **Unit 44** | **Unit 45** | **Unit 46** | **Unit 47** | **Unit 48** | **Unit 49** | **Unit 50** | **Unit 51** | **Unit 52** | **Unit 53** | **Unit 54** | **Unit 55** | **Unit 56** | **Unit 57** | **Unit 58** | **Unit 59** | **Unit 60** | **Unit 61** | **Unit 62** | **Unit 63** | **Unit 64** | **Unit 65** | **Unit 66** | **Unit 67** | **Unit 68** | **Unit 69** | **Unit 70** | **Unit 71** | **Unit 72** | **Unit 73** | **Unit 74** | **Unit 75** | **Unit 76** | **Unit 77** | **Unit 78** | **Unit 79** | **Unit 80** | **Unit 81** | **Unit 82** | **Unit 83** | **Unit 84** | **Unit 85** | **Unit 86** | **Unit 87** | **Unit 88** | **Unit 89** | **Unit 90** | **Unit 91** | **Unit 92** | **Unit 93** | **Unit 94** | **Unit 95** | **Unit 96** | **Unit 97** | **Unit 98** | **Unit 99** | **Unit 100**

Cumulative Performance Report

- View student performance and usage with a dynamic date range
- Create and save custom views of student data by grade, teacher, demographic, etc.



Establish a strong foundation

Advance biliteracy and cultural competency with adaptive, standards-aligned Spanish language instruction.



imaginelearning.com/imagine-espanol

877-725-4257 • solutions@imaginelearning.com

