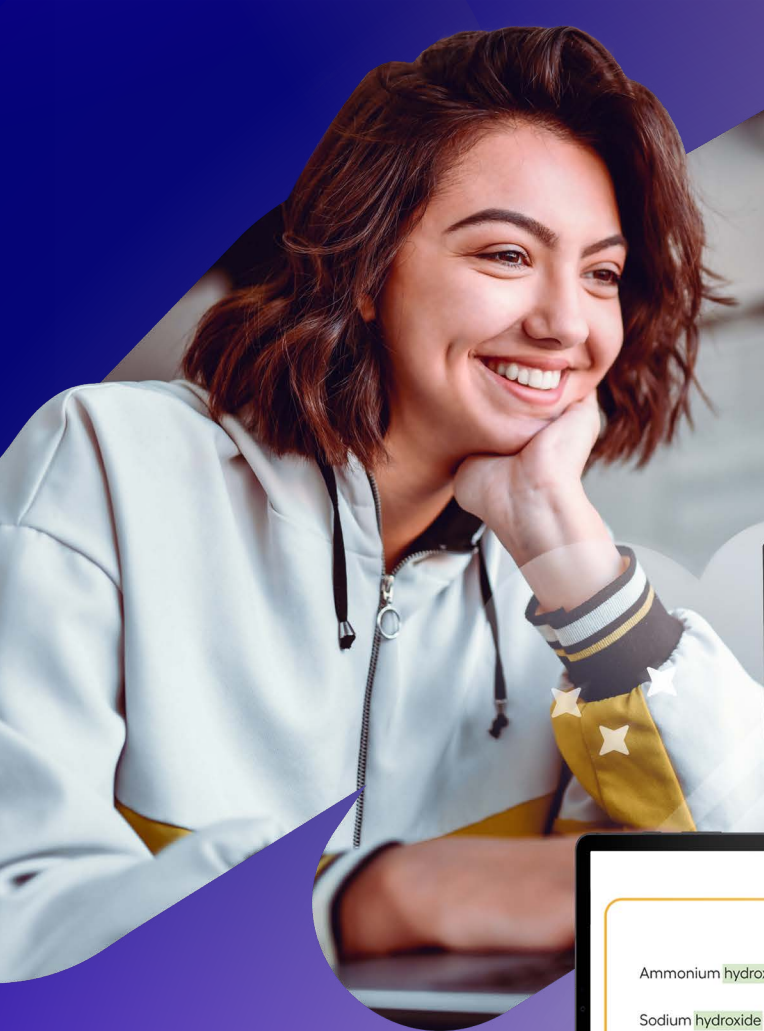


imagine edgeEX


Transforming the Imagine Edgenuity® experience
to propel student achievement



Welcome to Imagine Edgenuity

The brand-new Imagine Edgenuity experience, EdgeEX, has launched! Supporting your instruction to make every student a success story. Click to visit the Imagine Edgenuity Catalog to see the available courses in EdgeEX.


Reviews Required Gradebook Manage Students Manage User Groups Course Structures Calendar

Educator Launchpad 

Only EdgeEX courses are included in the Educator Launchpad. To view alerts for non-EdgeEX courses, visit the [Dashboard](#).

Assessments to Unlock	Out of Retakes	Work to Grade
	19	55
	19 assessments have had a retake requested for over 24 hours	55 of these activities have been complete for over 72 hours
	Quick View	Quick View

Ammonium hydroxide (NH_4OH)
Sodium hydroxide (NaOH)
Calcium hydroxide ($\text{Ca}(\text{OH})_2$)



Innovation to Improve Student Outcomes

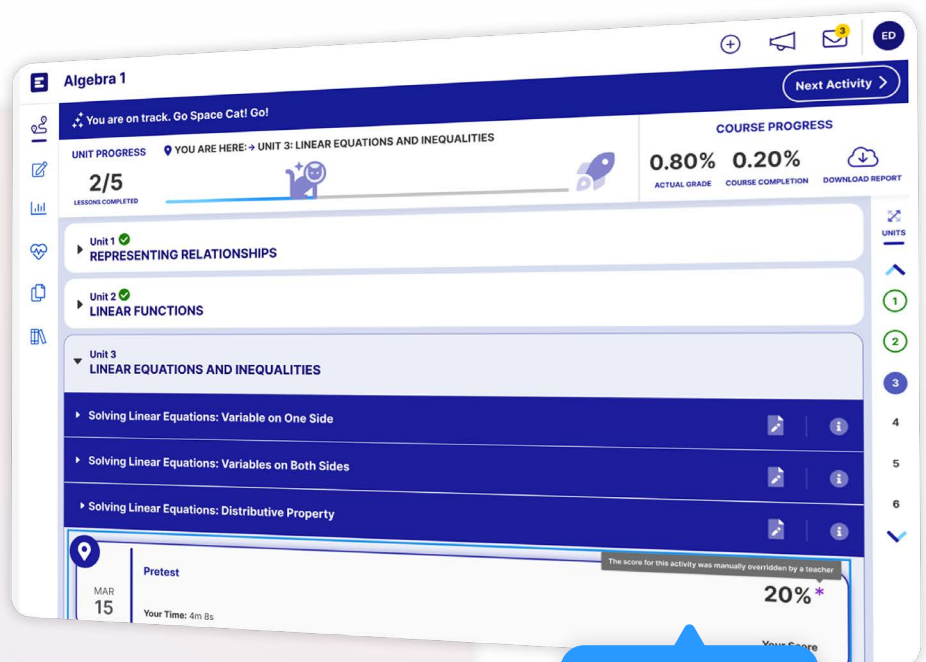
Imagine EdgeEX courses provide an engaging and accessible learning experience for all students, empower teachers through actionable data and easy-to-use tools, and give administrators more visibility and flexibility to customize.

For students — built to engage

Students will notice a refreshed look and feel, plus new motivational elements that enhance their experience and boost learning outcomes. Imagine EdgeEX puts students in control, with the ability to manage and track their own progress.

NEW FEATURES INCLUDE:

- ✓ Look and feel that appeals to the **modern digital learner**
- ✓ Dynamic, built-in features designed to support deeper comprehension
- ✓ Motivational features designed to promote **student-led learning**
- ✓ **Fillable Guided Notes** available digitally for easy access

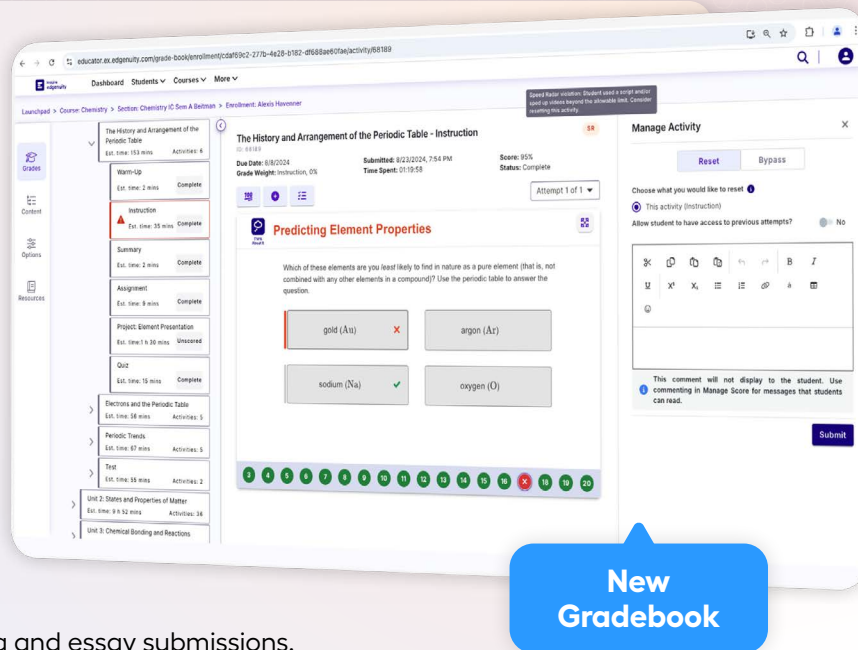


For teachers — time better spent

A streamlined teacher experience means teachers spend less time navigating and managing courses and more time supporting the needs of their students.

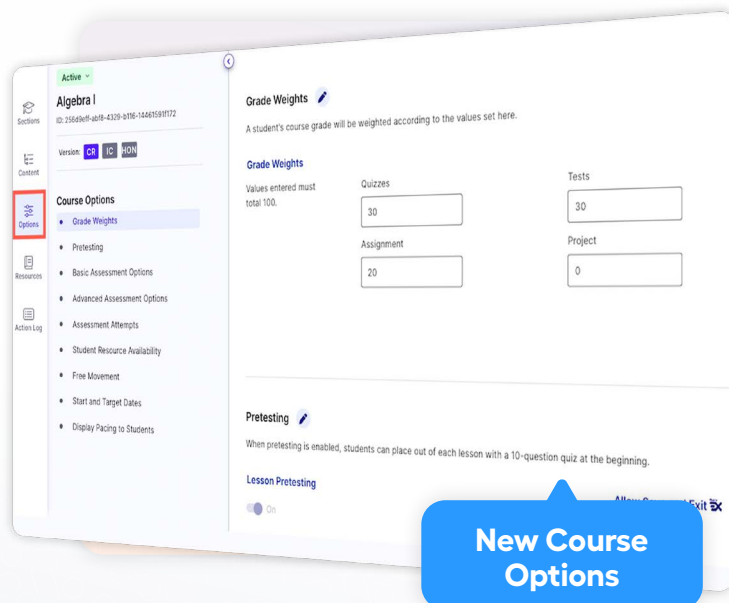
NEW FEATURES INCLUDE:

- ✓ Educator Launchpad helps teachers **prioritize their time**
- ✓ Streamlined grading tools to make scoring activities **quick and efficient**
- ✓ Course Hub gives teachers access to all the course-related actions and **information in one place**
- ✓ **Ability to toggle** answers on and off when previewing activities
- ✓ **AI-suggested comments** that help teachers develop feedback on short-writing and essay submissions.



For administrators — better visibility and flexibility

Imagine EdgeEX courses provide administrators with more powerful customization features and course management tools to meet the unique needs of their community.



NEW FEATURES INCLUDE:

- ✓ **Interactive, state-specific** course catalog with self-service provisioning
- ✓ Ability to push customizations to **multiple sections**
- ✓ More than 12 **new course options** to configure the student experience
- ✓ **Easy interface** to create Course Sections to assign students to teachers

Intentional, Student-Centered Course Design in Each Subject

Features that give students agency over their learning

Created using the principles of backward design, Imagine EdgeEX's course content and innovative features support students from grappling with big ideas to succeeding on anchor assessments.

The screenshot shows an Algebra I course interface. The main content area displays a math problem: "The perimeter of a scalene triangle is 14.5 cm. The longest side is twice that of the shortest side. Which equation can be used to find the side lengths if the longest side measures 6.2 cm?" Below the text is a diagram of a scalene triangle with sides labeled a , b , and $2a$. To the right of the diagram are four multiple-choice options: $9.3 + b = 14.5$ (marked correct with a green check), $18.6 + b = 14.5$ (marked incorrect with a red X), $12.4 + b = 14.5$, and $6.2 + b = 14.5$. On the far right, an "Answer Explanation" panel is open, showing a step-by-step solution: "Translate the key information from words into symbols." followed by a table with two rows: "The perimeter of a scalene triangle is 14.5 cm." and $a + b + 2a = 14.5$; and "The longest side measures 6.2 cm." and $2a = 6.2$. Below the table, it says "Solve for a." and shows the steps: $2a = 6.2$, $a = 3.1$, "Substitute 3.1 for a in the first equation.", $3.1 + b + 2(3.1) = 14.5$, $3.1 + b + 6.2 = 14.5$, and $9.3 + b = 14.5$.

Math

After an incorrect answer, students see a detailed explanation of the correct solution. These **Answer Explanations** provide point-of-use intervention and reteaching to help students understand where they went wrong to improve in the future.

The screenshot shows a Language Arts 9 course interface. The main content area displays a reading passage titled "Viewpoint in I Know Why the Caged Bird Sings" with the subtitle "from I Know Why the Caged Bird Sings". The passage text includes: "Mrs. Flowers didn't belong to our church, nor was she Momma's familiar. Why on earth did she insist on calling her Sister Flowers? Shame made me want to hide my face. Mrs. Flowers deserved better than to be called Sister. Then, Momma left out the verb. Why not ask, 'How are you, Mrs. Flowers?'" and "Although I was upset, neither of the women was in the least shaken by what I thought an unceremonious greeting. Mrs. Flowers would continue her easy gait up the hill to her little bungalow, and Momma kept on shelling peas or doing whatever had brought her to the front porch." and "Occasionally, though, Mrs. Flowers would drift off the road and down to the Store and Momma would say to me, 'Sister, you go on and play.'" and "Brother and Sister Wilcox is sho'tly the meanest—" "Is," Momma? "Is?" "Oh, please, not 'is,' Momma, for two or more. But they talked, and from the side of the building where I waited for the ground to open up and swallow me, I heard the soft-voiced Mrs. Flowers and the textured voice of my grandmother merging and melting. They were interrupted from time to time by giggles that came". To the right of the passage is a "CloseReader" section with a question: "Highlight the detail that reveals one of Momma's actions." Below the question is a text box containing the highlighted text: "Mrs. Flowers didn't belong to our church, nor was she Momma's familiar. Why on earth did she insist on calling her Sister Flowers? Shame made me want to hide my face. Mrs. Flowers deserved better than to be called Sister." Below the text box is the attribution: "—I Know Why the Caged Bird Sings, Maya Angelou". Below the attribution is another question: "What inference can be made about Momma based on her action in this passage?". Below the question are two multiple-choice options: "She wishes Mrs. Flowers went to her church." and "She dislikes Mrs. Flowers.".

The **CloseReader™** is designed to support active, close reading. In Imagine EdgeEX, texts and questions are presented side by side, so students can more easily refer back to the text as they answer questions.

Science

Social Studies

World Languages

AI Tools to Empower Teachers

Artificial intelligence features that save valuable time

Imagine EdgeEX's innovation was directly inspired by educator feedback, with courses and features designed to support teachers. This includes the newest tool to ease the grading workload.

Manage Score

Activity: Short Writing

Score: Pending

Score Activity

Scoring Guidance

Enter new score: 0-100

Suggested Comments BETA Share Feedback

To improve your response, consider varying your sentence structure to maintain reader interest. Mixing simple, compound, and complex sentences can make your writing more engaging.

May I suggest addressing the counterarguments more explicitly? While you mentioned economic conditions and political

Automatically receive AI-suggested comments to student writing submissions.

Type your comment here

Cancel Submit

Introducing the Grading Assistant

This tool provides teachers with AI-suggested comments on students' short-writing and essay submissions in the four core subject areas.

Suggested Comments BETA Share Feedback

To improve your response, consider varying your sentence structure to maintain reader interest. Mixing simple and complex sentences can make your writing more engaging.

May I suggest addressing the counterarguments more explicitly? While you mentioned economic conditions and political

Lengthen or shorten the suggested comment

Make longer

Make shorter

Type your comment here

Cancel Submit

Add custom feedback

Manage Score

Activity: Short Writing

Score: Pending

Score Activity

Scoring Guidance

Enter new score: 0-100

Suggested Comments

BETA

Share Feedback

Your response appears to be nonsensical. Let's discuss.

Detect nonsensical responses

✂

📄

📄

📄

↶

↷

B

I

U

x¹

x₁

≡

≡

⌚

á

📅

☺

Type your comment here

Cancel

Submit

Help identify students who may need more support

Suggested Comments

BETA

Share Feedback

This response contains potentially concerning language. Please review carefully.

Detect potentially harmful or concerning language

Secure, convenient, customizable AI to empower human potential

We believe in AI's promise to enhance education. Thoughtfully designed tools should work together with educators and reduce administrative burdens, allowing them to focus on what they do best — teaching and inspiring students.

THE GRADING ASSISTANT IS:

- 🔒

Secure — Your students' data is handled responsibly by a provider you know and trust. The AI Grading Assistant also reports back to the educator if it finds any concerning content.
- ⏮

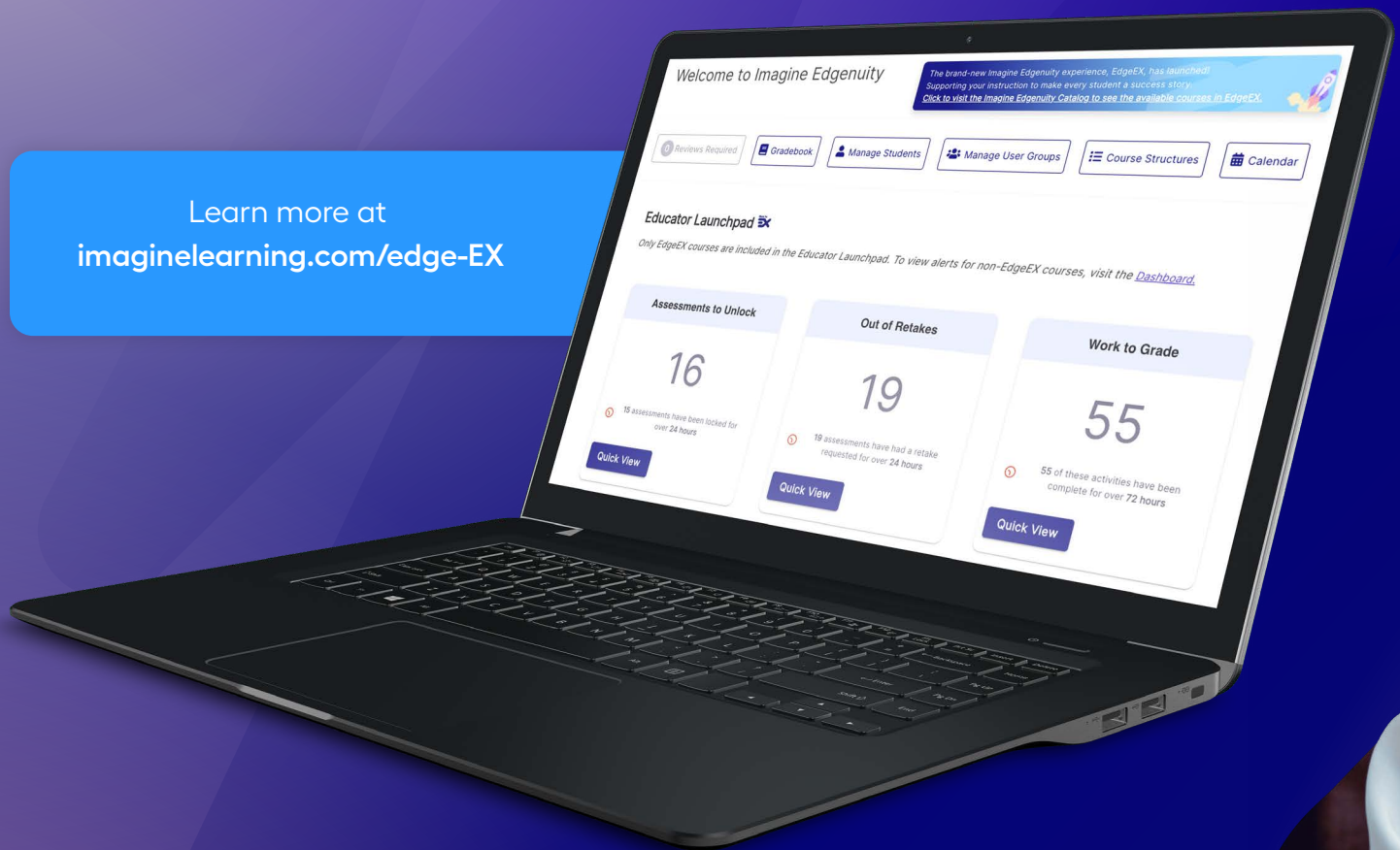
Convenient — Suggestions are aligned to the learning objective and cover multiple aspects of writing quality, providing highly targeted feedback directly within Imagine EdgeEX.
- ⚙️

Customizable — Educators can add, remove, or change content; the AI feedback is a starting point or suggestion, but there's no need to stop there.



Experience the next generation of
Imagine Edgenuity.

Learn more at
imaginelearning.com/edge-EX



imaginelearning.com/imagine-edgeEX

877-725-4257 • solutions@imaginelearning.com